

MIELELANI CONSULTANCY (PTY) LTD

**Environmental Management & Regulatory Advisory
Services**

COMPANY PROFILE | 2026

Applying Science for Sustainable, Real-World Solutions

www.mielelani.co.za

+27 12 012 5580 | 081 312 3951

info@mielelani.co.za

SACNASP & EAPASA Registered Professionals



Company Overview

Mielelani Consultancy (Pty) Ltd is a South African environmental consulting firm providing professional environmental management and regulatory advisory services to public and private sector clients.

The company delivers scientifically grounded, legally compliant, and practical environmental solutions supporting development activities across key sectors, including mining, energy, infrastructure, waste management, agriculture, and municipal services.

Our Approach

Mielelani Consultancy specialises in the interpretation and practical application of environmental legislation and associated regulatory processes. We support clients in securing environmental authorisations, licences, permits and approvals in full compliance with applicable statutory and regulatory requirements.

Through a practical and solution-driven approach, Mielelani Consultancy supports sustainable development by balancing environmental protection with responsible project implementation.

Professional Focus

The consultancy is led by **SACNASP** and **EAPASA** registered professionals with extensive experience in environmental assessment, compliance monitoring, and environmental management planning. All services are undertaken in alignment with national and provincial environmental legislation, regulatory guidelines, and best practice standards.

Company Background & Regulatory Framework

Who We Are

Mielelani Consultancy (Pty) Ltd is a South African environmental consulting firm providing professional environmental management and regulatory advisory services to both public and private sector clients.

The consultancy supports development projects by guiding proponents through complex environmental authorisation processes in compliance with applicable national legislation and regulatory frameworks. Our work is underpinned by scientific integrity, regulatory accuracy, and practical implementation.

Our work is underpinned by scientific integrity, regulatory accuracy, and practical, implementable environmental solutions. Mielelani Consultancy delivers services across South Africa with experience spanning environmental, mining, social, and regulatory contexts.

Professional Registrations

Mielelani Consultancy is led by professionally registered practitioners, including:

- **SACNASP** – South African Council for Natural Scientific Professions
- **EAPASA** – Environmental Assessment Practitioners Association of South Africa

All environmental assessment, compliance, and regulatory services are undertaken by suitably qualified and registered professionals in accordance with applicable legislative and professional requirements.

Our Commitment

The consultancy is committed to delivering environmentally responsible, legally compliant, and technically sound solutions that support sustainable development.

Our approach is practical, solution-driven, and tailored to the specific requirements and risk profile of each project.

Sectors Served

Mielelani Consultancy provides environmental support services across a range of sectors, including:

- Mining and Petroleum Developments
- Energy (Solar, Wind, Power Transmission)
- Infrastructure and Construction
- Waste Management and Landfills
- Agriculture and Rural Development
- Municipal and Government Projects

Regulatory Framework

The consultancy's services are delivered in alignment with, including but not limited to, the following key legislation:

- National Environmental Management Act, 1998 (Act No. 107 of 1998)
- Environmental Impact Assessment Regulations, as amended
- National Water Act, 1998 (Act No. 36 of 1998)
- Mineral and Petroleum Resources Development Act, 2002 (Act No. 28 of 2002)
- National Environmental Management: Waste Act, 2008

Company Objectives, Vision & Ethics



MISSION

To provide high-quality, scientifically sound, and legally compliant environmental consulting services that support sustainable development while enabling clients to meet regulatory obligations efficiently and responsibly.

VISION

To be a trusted environmental consulting partner recognised for technical excellence, regulatory integrity, and practical environmental solutions that contribute to sustainable development across South Africa.

COMPANY OBJECTIVES

- To deliver practical and implementable environmental solutions that add measurable value to client projects.
- To support clients in achieving and maintaining compliance with environmental legislation and licence conditions.
- To promote responsible environmental management across all sectors we serve.
- To remain at the forefront of environmental legislation through continuous professional development and engagement with regulatory authorities.
- To provide mentorship and skills development opportunities for graduates and emerging environmental professionals.

ETHICS

Professional Conduct guided by integrity, accountability, and regulatory compliance.

OUR SERVICES

Mielelani Consultancy (Pty) Ltd provides a comprehensive range of environmental management and regulatory advisory services to support development projects across South Africa.

Environmental Impact Assessment (EIA)

- Environmental screening
- Basic Assessment process
- Scoping and Environmental Impact Reporting (S&EIR)
- Section 24G applications
- Public participation process
- Environmental management programmes (EMPr)
- Submission and liaison with competent authorities

Mining & Prospecting Environmental Support

- MPRDA applications environmental support
- Lodging of MPRDA applications
- Regulatory application compliance support.
- Financial Provision Reviews

Environmental Compliance Monitoring & Auditing

- Environmental Control Officer (ECO) services
- Authorisations / licenses compliance reporting
- Environmental performance assessments

Water Use Licence Applications (WULA)

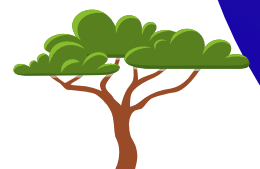
- Water use licence applications
- Water use registration and verification
- Hydrological and environmental screening support
- Liaison with Department of Water and Sanitation

Waste Management Licensing (WML)

- Waste management licence applications
- Integrated Waste Management Plans
- Landfill permitting and closure support
- Waste facility compliance monitoring

Environmental Specialist Studies

- Biodiversity and ecology assessments
- Wetland and watercourse assessments
- Environmental sensitivity mapping
- Heritage Impact Assessment



OUR TEAM & COMBINED EXPERIENCE

Team Overview

Mielelani Consultancy is supported by a team of highly qualified and experienced environmental professionals with in-depth knowledge of the environmental consulting sector.

The team possesses over forty years of combined professional experience, with members drawn from diverse academic backgrounds and practical exposure across multiple industries, including mining, infrastructure, energy, waste management, agriculture, and municipal development.

This multidisciplinary expertise ensures a comprehensive skill set within the consultancy, allowing projects to be delivered efficiently, cost-effectively, and within reduced timeframes, while maintaining full regulatory compliance.

Professional Registrations & Competencies

The consultancy's professional team includes:

- SACNASP registered Professional Natural Scientists
- EAPASA registered Environmental Assessment Practitioners
- Experienced Environmental Control Officers (ECOs)
- GIS and spatial data specialists
- Specialist associates in ecology, wetlands, and heritage studies

All services are undertaken in accordance with applicable legislative requirements, professional codes of conduct, and recognised best practice standards.

Core Areas of Experience

The team's collective experience includes:

- Environmental Impact Assessments (Basic Assessment & S&EIR)
- Water Use Licence Applications (WULA)
- Mining and Prospecting Rights Applications
- Environmental Compliance Monitoring and Auditing
- Waste Management Licensing and Compliance
- Environmental Management Programmes (EMPr)
- Public Participation Processes
- Coordination of Specialist Environmental Studies

Detailed professional profiles of key personnel are presented in the following section.

PERSONNEL PROFILES



Mr Khuliso Ramulondi (Pr.Sci.Nat; Reg.EAP)

Founding Director & Senior Environmental Consultant

Professional Summary:

Mr Khuliso Ramulondi is the Founding Director and Senior Environmental Consultant at Mielelani Consultancy. He is professionally registered with SACNASP and EAPASA.

He has over ten years of professional experience within the environmental consulting industry, providing environmental management and regulatory advisory services to public and private sector clients.

His experience spans construction, mining, agriculture, waste management, renewable energy, power generation and transmission infrastructure, and municipal development projects.

Professional Registrations:

- SACNASP – Professional Natural Scientist (Pr.Sci.Nat);
- EAPASA – Registered Environmental Assessment Practitioner (Reg.EAP);
- Geological Society of South Africa (GSSA) - Professional Member
- International Association for Impact Assessment South Africa (IAIASa) – Affiliate Member.

Key Areas of Professional Experience:

- Environmental Impact Assessments (Basic Assessment and S&EIR)
- Environmental authorisation support for mining permits and mining rights applications
- Integrated Waste and Water Management Licensing
- Environmental Compliance Monitoring and Auditing
- Environmental Control Officer (ECO) services for major infrastructure projects
- Public Participation Processes and stakeholder engagement
- Liaison with competent authorities at local, provincial, and national levels

Selected Project Experience:

- Environmental Control Officer (ECO) – Tshwane Automotive Special Economic Zone (TASEZ);
- Environmental Control Officer (ECO) – Eskom 400 kV Powerline Construction, Free State Province;
- Environmental Impact Assessment – E-waste Management Licence, Hammanskraal
- EIA – Mining Rights Applications, North West & Mpumalanga Provinces.

Academic Qualifications:

- Bachelor of Earth Science (Honours): Mining and Environmental Geology
- Master of Environmental Sciences (in progress)

PERSONNEL PROFILES



Mr Phathutshedzo Mugagadeli (Pr.Sci.Nat; Reg.EAP)

Senior Environmental Consultant

Professional Summary:

Mr Phathutshedzo Mugagadeli is a Senior Environmental Consultant at Mielelani Consultancy and registered with EAPASA and SACNASP.

He has over ten years of professional experience in the environmental consulting industry, including senior-level project management, environmental assessments, reporting, and public consultation processes across mining, waste management, construction, and infrastructure development projects throughout South Africa.

Professional Registrations:

- SACNASP – Professional Natural Scientist (Pr.Sci.Nat);
- EAPASA – Registered Environmental Assessment Practitioner (Reg.EAP);
- Society of South African Geographers (SSAG) – Professional Member.

Academic Qualifications:

- Bachelor of Environmental Sciences
- Bachelor of Arts (Honours): Geography
- Master of Environmental Science (in progress – UNISA)

Professional Approach

Mr Mugagadeli applies a structured and technically sound approach to environmental management, with strong emphasis on regulatory compliance, accurate reporting, and effective stakeholder engagement.

Key Areas of Professional Experience:

- Environmental Impact Assessments;
- Water Use Licence Applications (WULA) support;
- Environmental compliance monitoring and auditing;
- Environmental management of landfill and waste facilities;
- Public participation and stakeholder consultation processes; &
- Project management and coordination of environmental studies.

Selected Project Experience:

- Environmental Impact Assessment and Water Use Licence Application – Rooikop Coal Mining Project, Carolina District, Mpumalanga Province;
- Performance Assessment Report for Vierfontein Colliery, Emalahleni Local Municipality, Mpumalanga Province;
- Environmental Impact Assessments for mining projects across KZN, Limpopo, North West, Northern Cape, and Mpumalanga Provinces;
- GIS mapping and spatial analysis for infrastructure development projects.

PERSONNEL PROFILES



Ms Yvonne Gutoona (Cert.Sci.Nat)
Senior Environmental Consultant

Professional Summary:

Ms Yvonne Gutoona is a Senior Environmental Consultant at Mielelani Consultancy and a Certificated Natural Scientist registered with the South African Council for Natural Scientific Professions (SACNASP).

She has over ten years of professional experience providing environmental management and regulatory advisory services to both public and private sector clients, ranging from municipal to national level projects.

Her professional experience includes environmental authorisation processes, water use licensing, environmental compliance auditing, and facilitation of public participation processes across a wide range of development sectors.

Professional Registrations:

- SACNASP – Certificated Natural Scientist (Cert.Sci.Nat)r.
- GSSA - Professional Member.

Academic Qualifications:

- Bachelor of Science (Geography and Geology)
– University of Zimbabwe
- Radiation Safety Officer Certificate – Uranium Institute / Chamber of Mines

Professional Approach

Ms Gutoona applies a diligent and methodical approach to environmental consulting, with strong emphasis on regulatory compliance, accurate reporting, and effective stakeholder engagement.

Key Areas of Professional Experience:

- WULA
- EIA
- Integrated Water and Waste Management Plans (IWWMP)
- Environmental compliance monitoring and auditing
- Public Participation Process facilitation
- Environmental performance reporting

Selected Project Experience:

- Water Use Licence Application and Environmental Impact Assessment – Gold Mining Project, Welkom, Free State Province
- Financial Provision Reviews – Lower Orange Diamond Mine, Northern Cape Province
- Annual Performance Assessments – West Coast Resources diamond bulk sampling projects, Western Cape Province
- Annual Performance Assessments – Kernel Marine diamond bulk sampling projects, Western Cape Province

PERSONNEL PROFILES



Dr Luambo Jeffery Ramarumo (Pr.Sci.Nat)

Botanist / Ecology Specialist

Professional Summary:

Dr Luambo Ramarumo is an accredited Professional Natural Scientist registered with the South African Council for Natural Scientific Professions (SACNASP) in the field of Botanical Science.

He has over seven years of combined professional experience within the environmental consulting sector and academia, providing specialist ecological and botanical services to both public and private sector projects.

His expertise includes vegetation ecology, biodiversity conservation, threatened and protected species assessments, and ecological compliance support across mining, energy, infrastructure, forestry, water services, and conservation projects.

Professional Registrations:

- SACNASP – Professional Natural Scientist (Pr.Sci.Nat), Botanical Science

Academic Qualifications:

- Doctor of Philosophy (PhD): Ethnobotany
- Master of Science (MSc): Botany
- Bachelor of Science (Honours): Botany
- Bachelor of Science: Conservation and Biodiversity

Key Areas of Professional Experience:

- Terrestrial ecology and biodiversity assessments
- Threatened or Protected Species (TOPS) surveys and management
- Vegetation community assessments and sensitivity mapping
- Alien and Invasive Plant species management
- Ecological compliance monitoring and specialist reporting

Selected Project Experience:

- Search and rescue of Threatened or Protected Plant Species – Aries–Upington 400 kV Powerline Construction, Northern Cape Province
- Ecology Specialist for prospecting and mining rights applications across Limpopo, KwaZulu-Natal, Western Cape, and North West Provinces
- Biodiversity assessments for mining and energy generation projects

Research & Publications

Dr Ramarumo is an accomplished scientific researcher and has published eight (08) peer-reviewed scientific research articles in Department of Higher Education and Training (DHET)–accredited journals.

PERSONNEL PROFILES



Ms Nobukhosi Dlamini

Environmental Consultant

Professional Summary:

Ms Nobukhosi Dlamini is an Environmental Consultant at Mielelani Consultancy, having joined the firm in 2022. She has been actively involved in environmental consulting projects within the mining and infrastructure development sectors.

She has gained practical experience in environmental report compilation, site assessments, stakeholder engagement support, and environmental data collection and analysis. Her role contributes to the effective execution of environmental assessment and compliance processes across various projects.

Ms Dlamini is committed to professional development and sustainable environmental management, bringing diligence, adaptability, and a proactive approach to project support.

Key Areas of Professional Experience:

- Support to environmental impact assessment processes
- Assistance with mining-related environmental assessments
- Environmental site assessments and field data collection
- Environmental reporting support and documentation control
- Stakeholder engagement coordination and record keeping

Selected Project Experience:

- ECO duty for TASEZ
- BAasic Assessment Process for prospecting right application in Vryheid, KZN
- Participation in mining-related environmental assessment projects
- Coordination support for stakeholder engagement processes

Professional Status

- Aspiring Environmental Scientist

Professional Approach

Ms Dlamini applies a methodical and committed approach to her work, supporting senior consultants in delivering accurate, timely, and compliant environmental consulting services.

PERSONNEL PROFILES

Mr Mpho Moses Mphephu

Projects Administrator

Professional Summary:

Mr Mpho Moses Mphephu is a Projects Administrator at Mielelani Consultancy with extensive experience in environmental project administration and public consultation processes

He has over ten years of experience within the environmental consulting industry, including more than eight years providing public consultation and stakeholder engagement services in accordance with the Mineral and Petroleum Resources Development Act, 2002 (Act No. 28 of 2002) and the National Environmental Management Act, 1998 (Act No. 107 of 1998) and its associated EIA Regulations.

Mr Mphephu has a strong understanding of legislative requirements, regulatory timeframes, and authority consultation processes applicable to environmental projects across South Africa.

Professional Approach

Mr Mphephu plays a critical role in ensuring that environmental projects are implemented efficiently through effective coordination, structured stakeholder engagement, and strict adherence to legislative timeframes and procedural requirements.

Key Areas of Responsibility:

- Project administration and coordination across environmental assignments
- Public Participation Processes (PPP) in terms of NEMA and MPRDA
- Interested and Affected Parties (I&AP) identification and consultation
- Authority consultation and regulatory correspondence
- Resource allocation and project activity scheduling
- Progress tracking, reporting, and documentation management
- Property (land) access negotiations and stakeholder liaison

SELECTED PROJECT EXPERIENCE

Mielesani Consultancy has successfully delivered environmental consulting services across South Africa across multiple sectors.

Environmental Control Officer (ECO) Services & Compliance Monitoring

Tavistock 2.5 Seam Plant Expansion – 14 km Conveyor Belt

Client: Vector Engineering (Pty) Ltd

Location: Ogies, Mpumalanga Province

Scope: Environmental compliance monitoring and EMP implementation

Role: Environmental Control Officer (ECO)

Tshwane Automotive Special Economic Zone (TASEZ)

Client: Mawedza Geo-Environmental Consulting

Location: City of Tshwane, Gauteng

Scope: Weekly monitoring and monthly compliance audits

Role: ECO

Lali Rothe E-Waste Refinery Facility

Client: Lali Rothe Platinum Refineries SA (Pty) Ltd

Location: Hammanskraal, Gauteng

Scope: Monthly environmental compliance audits

Role: ECO

Vierfontein Colliery – Annual Performance Assessment

Client: Idwala Crypts (Pty) Ltd

Location: Emalahleni, Mpumalanga

Scope: Section 41(3) MPRDA audit

Role: Independent Environmental Auditor

Financial Provision Review - Lower Orange Diamond Mine

Client: Lower Orange Diamond Mine

Location: Baken, Northern Cape Province

Scope: Review of Financial Provision in terms of the Financial Provision Regulations of 2015.

Role: Independent Auditor

Environmental Impact Assessments (EIA & BA)

Coal Mining Right – Rooikop 11 HT

Client: Percy Feeding Scheme CC

Location: Piet Retief, Mpumalanga

Scope: Scoping & Environmental Impact Reporting

Role: Environmental Assessment Practitioner (EAP)

Stormwater Pipeline Construction

Client: Nevhutalu Consulting Engineers CC

Location: Mabopane, Gauteng

Scope: Basic Assessment for Environmental Authorisation Application

Role: EAP

Earthen Dam Wall Construction - Farm Vermaakskraal 938 GS

Client: Epcor Holdings (Pty) Ltd

Location: Estcourt, KZN

Scope: Subcontractor appointed to undertake Scoping and Environmental Impact Reporting for an Environmental Authorisation Application

Role: EAP

Lali Rothe E-Waste Refinery Facility

Client: Lali Rothe Platinum Refineries SA (Pty) Ltd

Location: Hammanskraal, Gauteng

Scope: Basic Assessment for Environmental Authorisation Application

Role: EAP

Prospecting Right Application - Farms Bushmans Graaf Water 68, Farm Kruispad 72 and Steenkamps Kraal 70

Client: Colt Resources (Pty) Ltd

Location: Van Rhyndorp District, Western Cape Province

Scope: Basic Assessment for Environmental Authorisation Application

Role: EAP

SELECTED PROJECT EXPERIENCE

ECO Services & Compliance Monitoring (Continued)

Financial Provision Review - Lower Orange Diamond Mine
Client: Lower Orange Diamond Mine
Location: Baken, Northern Cape Province
Scope: Review of Financial Provision in terms of the Financial Provision Regulations of 2015.
Role: Independent Auditor

Ecology & Biodiversity Specialist Studies

TOPS Search & Rescue – Aries–Upington 400 kV Powerline
Client: Mkhulu Electrical Development
Location: Northern Cape
Scope: TOPS search, identification, geotagging and relocation of protected plant species
Role: Botanist

TOPS Search & Rescue - Ferrum–Upington 400kV
Client: Mkhulu Electrical Development
Location: Upington, Northern Cape Province
Scope: TOPS search, identification, geotagging and relocation of protected plant species
Role: Botanist

Ecological Impact Assessment – Prospecting Right
Client: Colt Resources (Pty) Ltd
Location: Van Rhynsdorp, Western Cape
Scope: Ecological specialist assessment
Role: Ecological Specialist

Water Use Licence Applications (WULA)

Water Purification Plant – Aqua Air Africa
Client: Aqua Air Africa (Pty) Ltd
Location: Ga-Rankuwa Industrial Area, Gauteng
Scope: Compilation and submission of WULA
Role: Environmental Scientist

Increased Water Abstraction – Witbank Dam
Client: eMalahleni Local Municipality
Location: Mpumalanga
Scope: Water Use Licence Application
Role: Environmental Scientist

Coal Mining Right – Rooikop 11 HT
Client: Percy Feeding Scheme CC
Location: Piet Retief, Mpumalanga
Scope: Water Use Licence Application
Role: Environmental Scientist

Stormwater Pipeline Construction
Client: Nevhutalu Consulting Engineers CC
Location: Mabopane, Gauteng
Scope: Water Use Licence Application
Role: Environmental Scientist

Special Maintenance of Road P34/5 (R506) From Schweizer-Reneke to Christiana (30.0km) Phase 2
Client: Nevhutalu Consulting Engineers CC
Location: Schweizer-Reneke, Northwest
Scope: Water Use Licence Application
Role: Environmental Scientist

CONTACT DETAILS

For enquiries, proposals, and professional environmental consulting services.

Mielelani Consultancy (Pty) Ltd

Registration Number: 2015/391678/07

Company Type: Private Company (Pty) Ltd

Contact Information

☎ Telephone: +27 12 012 5580

✉ Email: info@mielelani.co.za

🌐 Website: www.mielelani.co.za

Key Contact Person

Mr Khuliso Ramulondi

Founding Director & Senior Environmental Consultant

✉ Email: khuliso@mielelani.co.za

📱 Mobile: 081 312 3951